

LOC/DME I-JDL	APP CRS	Rwy Ldg	8457
109.9	071°	TDZE	25
Chan 36		Apt Elev	25

LDA X RWY 8  
JUNEAU INTL (JNU)(PAJN)

ADF required.

⚠

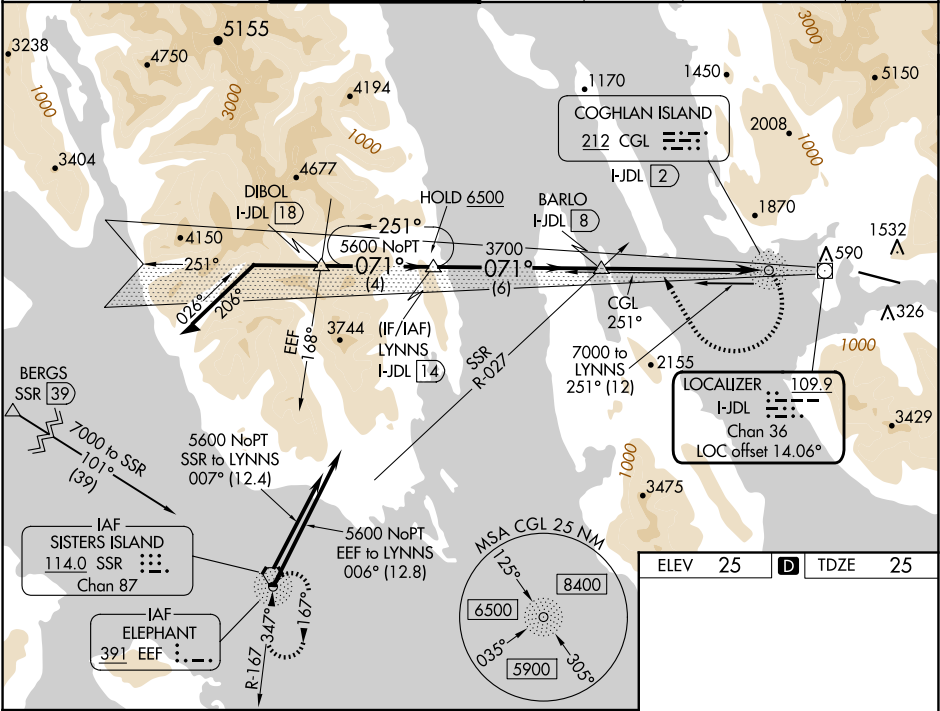
1°C

Circling to Rwy 26 NA at night. Circling NA north of Rwy 8-26. Rwy 8 helicopter visibility reduction below 1 SM NA. Inop table does not apply. When Juneau altimeter setting not received, procedure NA. CAUTION: Any go-around after passing MAP will not provide standard obstruction clearance. Circling Cat A night visibility minimum 5 SM, Circling Cat B, C, D night visibility minimum 10 SM. Straight-in Rwy 8 at night, operational VGSI required, remain on or above VGSI glidepath until threshold.

MALSF

MISSED APPROACH: Immediate climbing right turn to 5600 on heading 310° and on CGL NDB bearing 251° to intercept SSR VORTAC R-027 direct SSR VORTAC or EEF NDB and hold.

ATIS 135.2	ANCHORAGE CENTER 133.9	JUNEAU TOWER * 118.7 (CTAF) 0 278.3	GND CON 121.9	CLNC DEL 121.9	JUNEAU RADIO 122.2	UNICOM 122.95
---------------	---------------------------	--	------------------	-------------------	-----------------------	------------------



Remain within 10 NM

Use I-JDL DME when on LDA course.

4 NM 6 NM 6 NM 3.2 NM

CATEGORY	A	B	C	D
S-LDA 8	3200-4 3175 (3200-4)			NA
CIRCLING	3200-4 3175 (3200-4)			3340-4 3315 (3400-4) 3700-4 3675 (3700-4)

5600 CGL 251° SSR R-027 EEF

5600 CGL 251° SSR R-027 EEF

5600 CGL 251° SSR R-027 EEF

5600 CGL 251° SSR R-027 EEF

071°

TWR

8857 X 150

4800 X 150

20°

AK, 02 OCT 2025 to 27 NOV 2025

AK, 02 OCT 2025 to 27 NOV 2025