

LOC/DME I-RTS	APP CRS	Rwy Ldg	7800
111.9	318°	TDZE	5045
Chan 56		Api Elev	5050

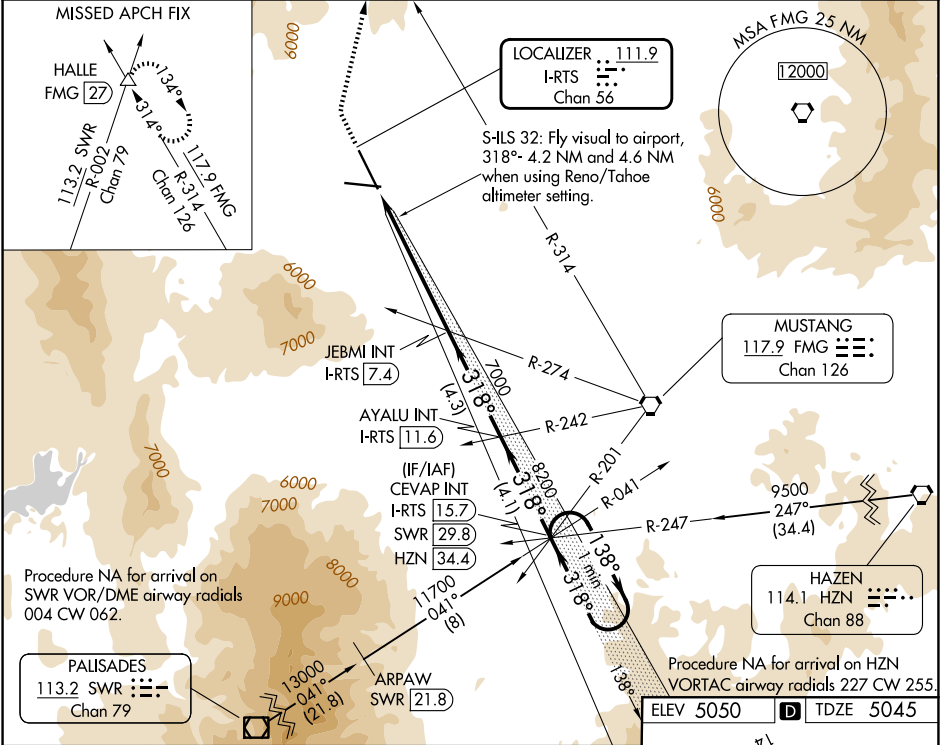
ILS or LOC RWY 32
RENO/STEAD (RTS)

⚠ NA
Inoperative table does not apply. Procedure NA at night. When local altimeter setting not received, use Reno/Tahoe Intl altimeter setting and increase all DA/MDA 120 feet. VDP NA when using Reno/Tahoe Intl altimeter setting. Circling NA for Cat D southwest of Rwy 14-32.

MALSR

MISSED APPROACH: Climb to 6740 then climbing right turn to 14000 on heading 356° and FMG VORTAC R-314 to HALLE INT/FMG 27 DME and hold, continue climb-in-hold to 14000.

AWOS-3 135.175	NORCAL APP CON 126.3 353.9	UNICOM 122.7 (CTAF)
-------------------	-------------------------------	------------------------



6740 14000 FMG HALLE	Use I-RTS DME when on the localizer course.			
↑ hdg R-314 △				
S-ILS 32: Fly visual to airport, 318°- 4.2 NM and 4.6 NM when using Reno/Tahoe altimeter setting.	JEBMI INT I-RTS 7.4	AYALU INT I-RTS 11.6	CEVAP INT I-RTS 15.7 SWR 29.8 HZN 34.4	One Minute Holding Pattern
I-RTS 1.5	I-RTS 6.6	7000	8200	9400
5.1 NM	0.8	4.3 NM	4.1 NM	GS 3.00° TCH 40
CATEGORY	A	B	C	D
S-ILS 32	6425-3 1380 (1400-3)			
S-LOC 32	6720-1¼ 1675 (1700-1¼)	6720-1½ 1675 (1700-1½)	6720-3 1675 (1700-3)	
CIRCLING	6720-1¼ 1670 (1700-1¼)	6720-1½ 1670 (1700-1½)	6720-3 1670 (1700-3)	

