

LOC I-LQG	APP CRS	Rwy Idg	5002
111.7	073°	TDZE	793
		Apt Elev	793

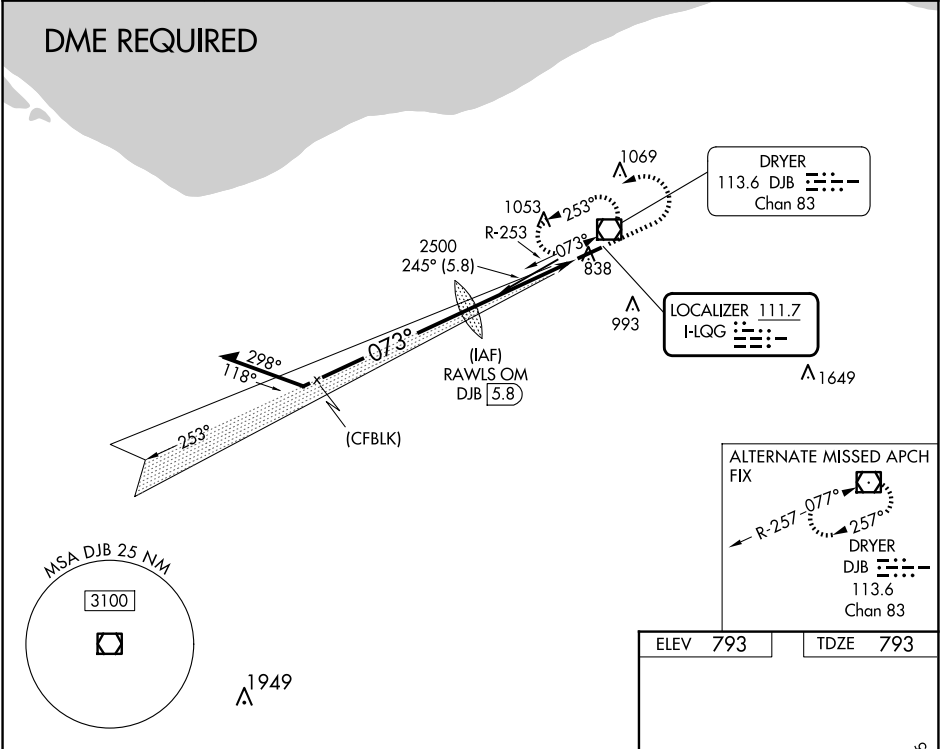
ILS or LOC RWY 7
LORAIN COUNTY RGNL (LPR)

⚠ For inoperative MALSR, increase S-LOC 7 Cats C/D visibility to 1½ mile. VDP NA with Cleveland-Hopkins Intl altimeter setting. When local altimeter setting not received, use Cleveland-Hopkins Intl altimeter setting and increase all DA 36 feet and all MDA 40 feet.

MALSR

MISSED APPROACH: Climb to 1400 then climbing left turn to 3000 on heading 270° then left turn direct DJB VOR/DME and hold.

ASOS 118.925	CLEVELAND APP CON 125.35 346.325	CLNC DEL 125.7	UNICOM 122.7 (CTAF) 0
-----------------	-------------------------------------	-------------------	---------------------------------



Remain within 10 NM				
RAWLS OM DJB 5.8				
2500 073° 2263 2500				
GS 3.00° TCH 54				
3 NM 1.4 NM				
CATEGORY	A	B	C	D
S-ILS 07	993-½ 200 (200-½)			
S-LOC 07	1280-½ 487 (500-½)		1280-1 487 (500-1)	
CIRCLING	1280-1 487 (500-1)	1360-1 567 (600-1)	1420-1¾ 627 (700-1¾)	1420-2 627 (700-2)

ELEV	793	TDZE	793	
REIL Rwy 25 L HIRL Rwy 7-25 L				
FAF to MAP 4.4 NM				
Knots	60	90	120	150 180
Min:Sec	4:24	2:56	2:12	1:46 1:28

EC-2, 30 OCT 2025 to 27 NOV 2025

EC-2, 30 OCT 2025 to 27 NOV 2025